

# Del Norte Regional Recycling and Transfer Station

Located at:  
111 S. DEL NORTE BLVD.  
OXNARD, CA 93030

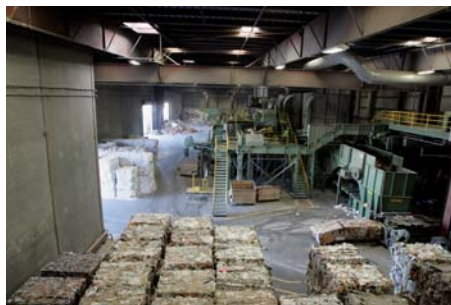


## Facility Hours:

- **Transfer Station:**  
Monday – Saturday:  
5:30 A.M. to 5:00 P.M.
- **Buyback Center:**  
Monday – Saturday:  
7:00 A.M. to 4:00 P.M.
- **Recyclable Hazardous Waste**  
(Such as batteries, oil, latex paint and anti-freeze):  
Monday – Saturday:  
7:00 A.M. to 4:00 P.M.  
(Please Use Del Norte Blvd. entrance)
- **Closed Sunday**

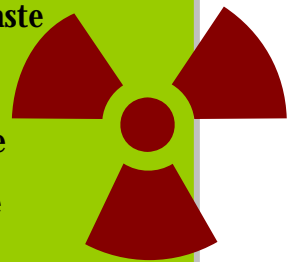
## Accepted Materials

- ✓ Refuse
- ✓ Greenwaste
- ✓ Scrap Wood
- ✓ Tires
- ✓ Refrigerators
- ✓ Air Conditioners
- ✓ Cardboard
- ✓ Appliances
- ✓ Bulky (Hard To Handle) Items



## Materials Not Accepted

- ✓ Hazardous Waste
- ✓ Liquid Waste
- ✓ Burning Waste
- ✓ Sewage Sludge
- ✓ Dead Animals
- ✓ Septic Tank Pumpings
- ✓ Non-Hazardous Waste  
Requiring Special Handling



Trash Trucks & Self-Haulers: Enter from Sturgis Road and pull up to the main scalehouse.

**SPEED LIMIT IS 15 MILES PER HOUR!**

# Del Norte Regional Recycling and Transfer Station



For Information, or  
To Set Up An  
Account, Please Call:  
(805) 278-8200



## RECYCLING AND TRANSFER STATION FEES AS OF NOVEMBER 1, 2010

State law requires that the facility know the source (origin) of your trash. Please be prepared to provide that information to the scalehouse attendant.

### Owner:

#### **The City of Oxnard**

For Information, please contact  
the Public Works Department/  
Environmental Resources

Division:  
(805) 385-8060

### Operator/Contractor:

#### **Republic Services Inc.**

For information, please contact  
Republic Services, Inc.:  
(805) 278-8200

**CASH ONLY, NO  
CREDIT OR DEBIT  
CARDS!**

- ❖ **Refuse (trash):** \$47.14 per ton (one ton equals 2,000 pounds)
  - **Minimum Charge For Disposal** (up to 1,000 pounds): \$25.04
  - **For 1,001 to 1,999 pounds:** Percentage of the ton price (\$47.14)
- ❖ **Yard Waste:** \$47.14 per ton
- ❖ **Construction/Demolition Debris (C & D):** Concrete, asphalt, wood, metals, brick, dirt, drywall, and related materials that are not listed = \$50.04 per ton
- ❖ **Tires:**
  - Small (passenger) \$5 each
  - Medium \$30 each
  - Large \$200 each
- ❖ **Refrigerators/Air Conditioners:** \$15 each
  - **Freon Extraction:** \$20 each (plus disposal)
- ❖ **Other Appliances:** \$15 each
- ❖ **Hard to Handle Bulky Items:** \$100 per ton
- ❖ **Special Materials Handling Fee:** \$60 per hour
- ❖ **Host Fee:** \$2.00 per ton in addition to the regular tonnage fee for refuse collected outside Oxnard city limits and delivered to the facility.

